

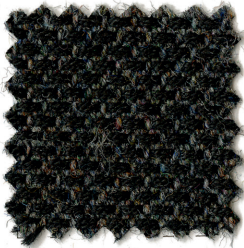
2075

 **LUXY.**

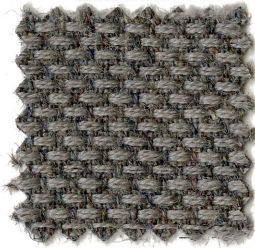
CATEGORIA K/
CATEGORY K

TESSUTO/
UPHOLSTERY

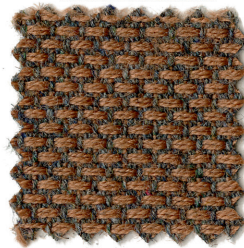
RE-WOOL
kvadrat



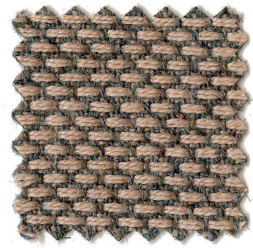
2099



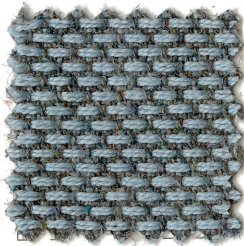
2077



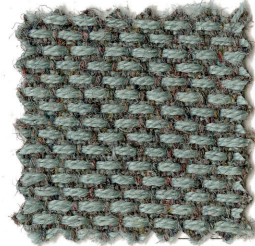
2066



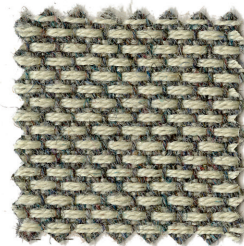
2081



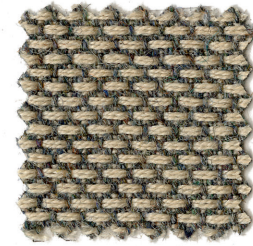
2072



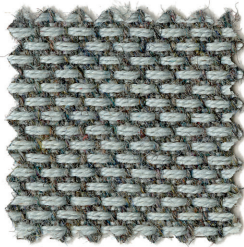
2097



2068



2083



2094





DESTINAZIONI D'USO/ APPLICATIONS

Uffici, alberghi, istituzioni, uso domestico.
Grande resistenza all'abrasione/ Institutions,
domestic use. Great durability

RESISTENZA ALL'ABRASIONE (CICLI MARTINDALE)/ ABRASION RESISTANCE (MARTINDALE CYCLES)

EN ISO 12947-2 100.000

RESISTENZA ALLO SFREGAMENTO/ FASTNESS TO RUBBING (EN ISO 105 - X12)

Umido/ Wet 4/5

Secco/ Dry 4/5

RESISTENZA ALLA LUCE/ LIGHT FASTNESS

EN ISO 105 - B02 5/7

PILLING

EN ISO 12945 4

MANUTENZIONE E PULIZIA/ MAINTENANCE AND CLEANING

Aspirare e lavare a secco/ Vacuum and dry cleaning

RE-WOOL

CARATTERISTICHE/ DESCRIPTION

45% Lana riciclata

45% Lana Vergine pettinata

10% nylon

Altezza 140 cm

Peso circa 386 g/m²

Possono verificarsi differenze di colore

45% recycled wool

45% new wool

10% nylon

Width 140 cm

Weight 386 g/m²

Differences in color may occur

INFIAMMABILITÀ/ FLAMMABILITY

11M UNI 9175

EN 1021 - 1

EN 1021 - 2

BS 5852 CRIB 5 Trattato ignifugo / With treatment

BS 5852 ignition source 3

BS 5852 Part 1

AS/NZS 1530.3

TB 117:2013

IMO FTP CODE 2010: Part 8

NF D 60 013

OENORM B1/Q1

ASSORBIMENTO ACUSTICO / ACOUSTIC ABSORPTION

ISO 354:2003

Class D (Flat) 0.50

Class C (Waved) 0.75

Flusso d'aria / Airflow

EN 29053 258 Pa s/m

10 ANNI DI GARANZIA/ 10 YEAR WARRANTY

REVISIONE TESSUTI 05-2021/

FABRIC REVIEW 2021-05

